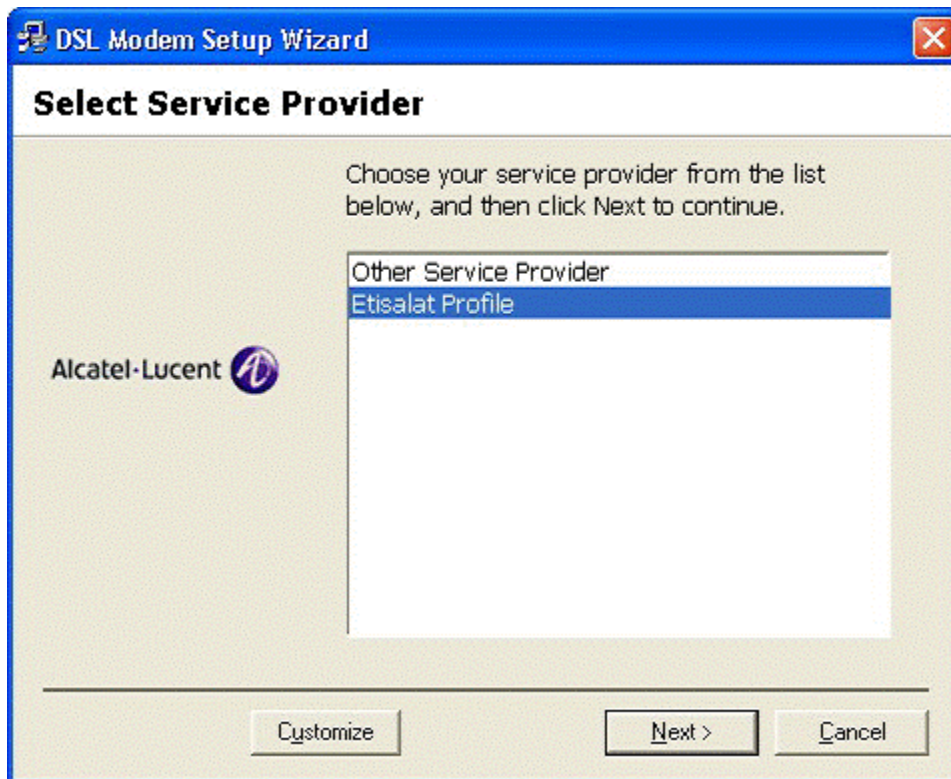


How to configure Internet on Alcatel Lucent?

Alcatel Lucent

1. Insert the CellPipe 20A-USB-UAE Installation CD into the CD-ROM drive. The system should detect the installation program and run the program automatically.
If installation does not begin automatically after a few seconds, browse the CD, find the setup.exe icon located in it and double-click it. (Note: To browse the contents of the CD, open My Computer from the desktop, and right-click on your CD-ROM drive. Select the “Explore” option and this will reveal the folders and files on the CD).
The installation screen will appear as follows:



2. Collect the customer ADSL a/c number and check the port ID.
3. If the port start with HU01/x/x/x Eg: DXB-GHI155-HU01/0/30/1, follow the steps from **a to d and finish installation, Otherwise skip the a to d steps and start from Step 4.**
 - a. Select Other Service provider. Select WAN
 - b. In put VPI/VCI 0/50
 - c. Select Protocol RFC 2516 PPPoE
 - d. Select Multimode..... Continue.... PPPoE dialer will be created in Desktop.

Select “Etisalat Profile” from the Select Service Provider dialog box and click Next.



You will be informed that the DSL Modem Setup Wizard is installing files on your system

The computer will begin to transfer files needed to run the Modem.

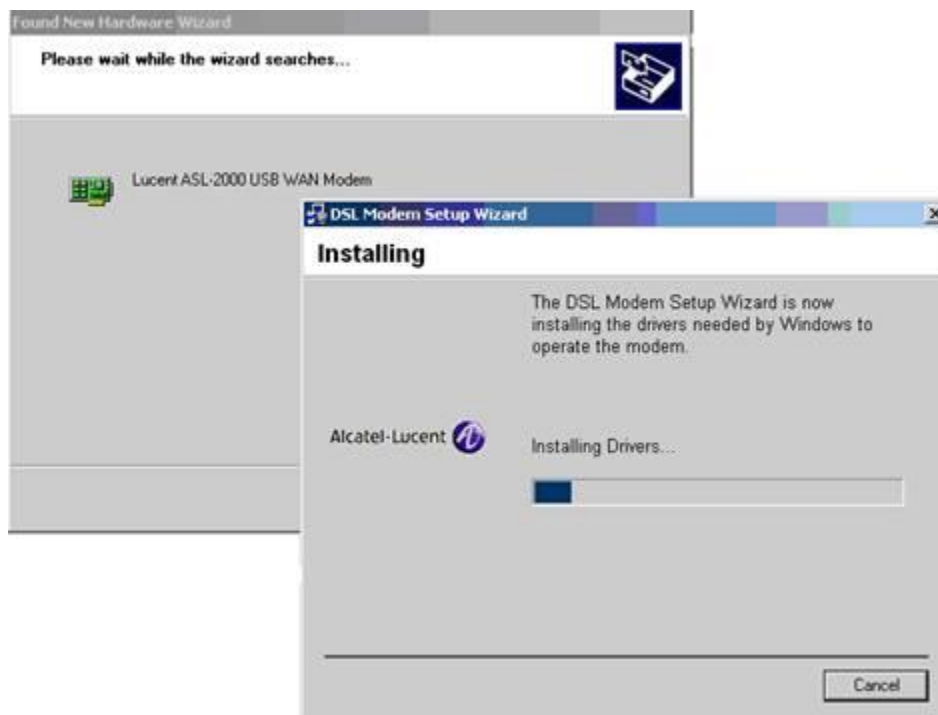
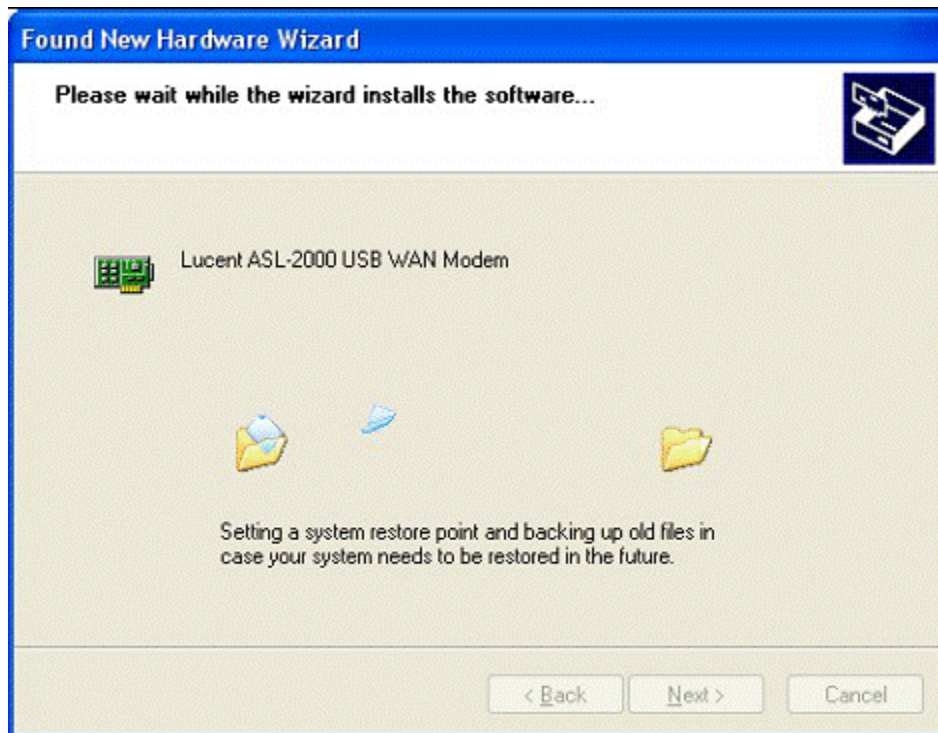
After the files are transferred, another Installation screen will prompt you to plug your Modem into your computer.



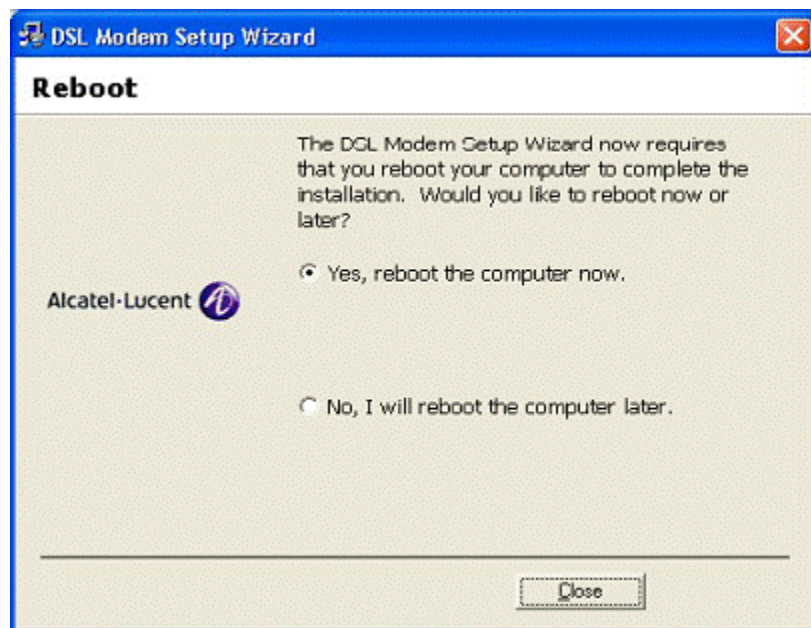
Plug the rectangular end of the USB cable (USB type A connector) into the USB port of your PC, and then plug the square end of the USB cable (USB type B connector) into the USB port of the ADSL Modem.

-  USB Type A connector – connect to computer
-  USB Type B connector – connect to Modem

The USB Modem will be detected and messages will be displayed as the Modem software is installed. All files are automatically installed. Various menus may appear briefly while files are installed. See illustration below

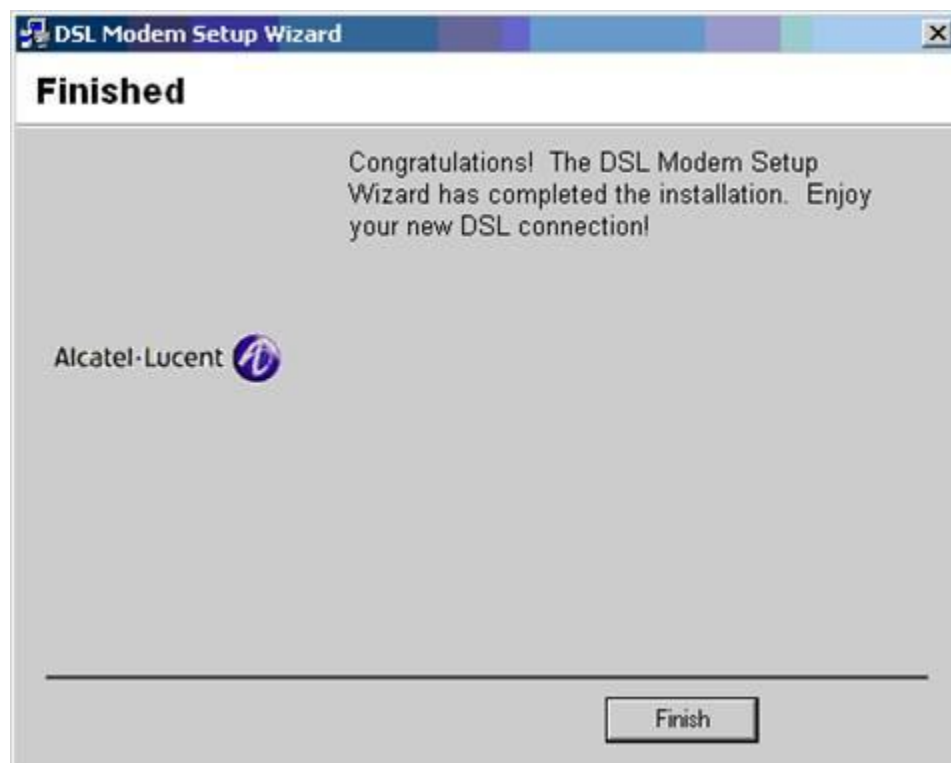




When the installation is complete, you are prompted to restart the computer



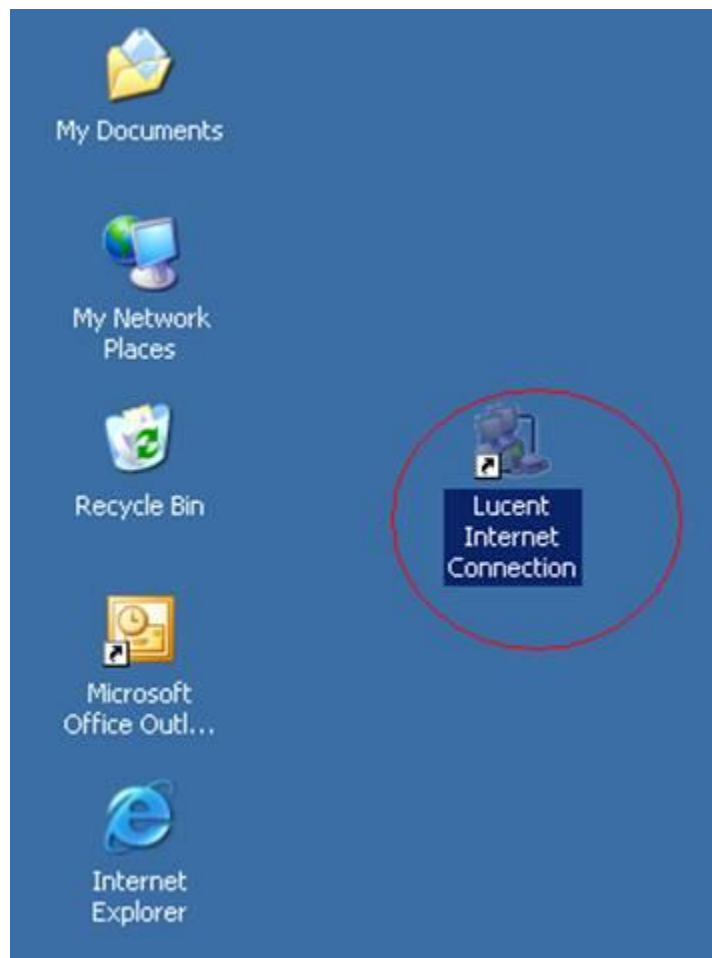
Restart the computer if it is convenient to do so. To restart, select the “Yes, reboot the computer now” option and click the Close button

Upon restarting one last Setup Wizard dialog appears to inform you the Modem has been installed. Click the Finish button to close the box. The Modem is now ready to use



Now Plug in the provided ADSL cable (one end to modem and the other end to DSL socket). Wait for the DSL modem icon  in the "system tray" to become green . (This may take around 40 Seconds).

For connecting to Internet, double click the dialup icon "Lucent Internet Connection" that was automatically created on the desktop.



Type "User name" and "Password" that is relevant to your DSL account and click "Dial" button. Your internet connection will be established after authentication



To disconnect your session from Internet, double click the dialup icon in the system tray and click "Disconnect"

Note: Installation Steps listed above automates the settings like VPI/VCI, protocol selection etc. with the default values. Only in case Etisalat has asked you to change any of those settings, you may have to use "customize" button Shown in the installation step No.1). Further details are available in the Installation Guide provided in the CD that came with your product.