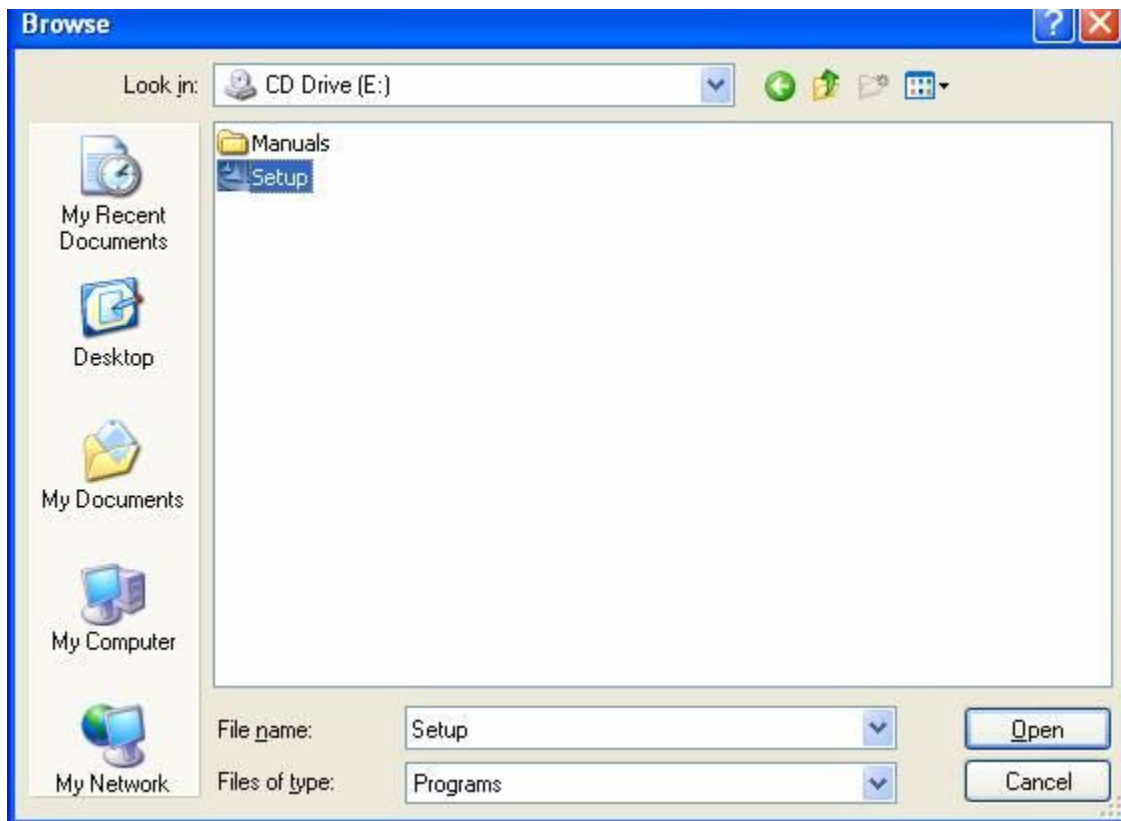


How to configure Internet on Aztech 206U?

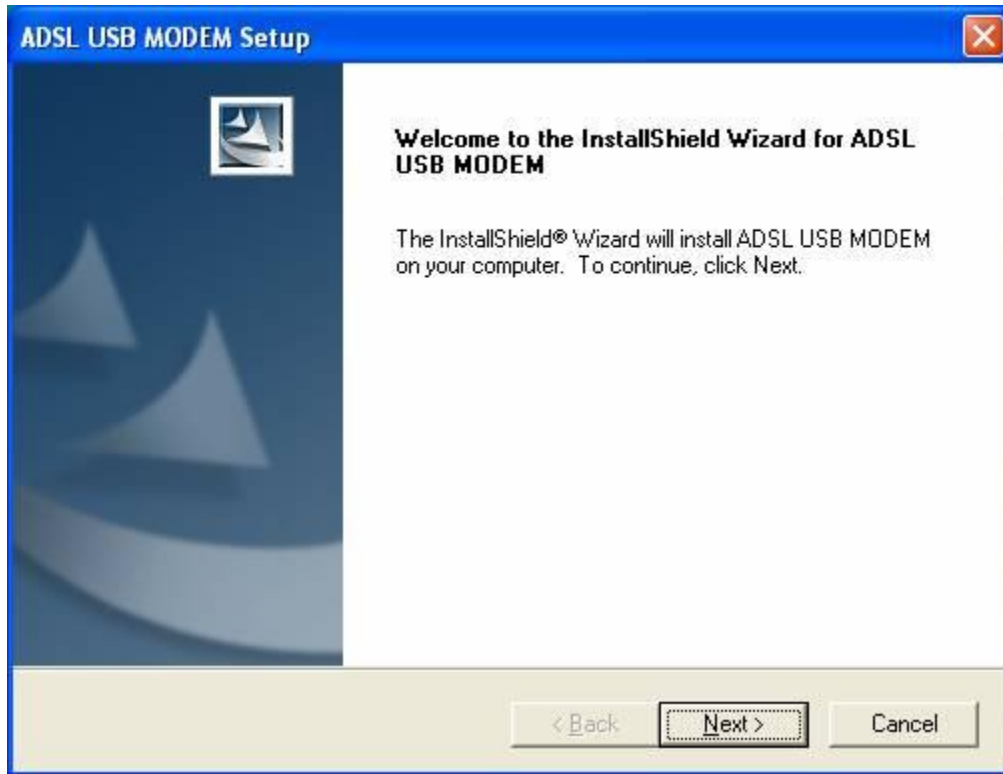
Aztech 206U Modem Installation

1. First install the software, and then connect modem.
2. Please insert ADSL CD, Installation will start automatically, if not follow the below step:

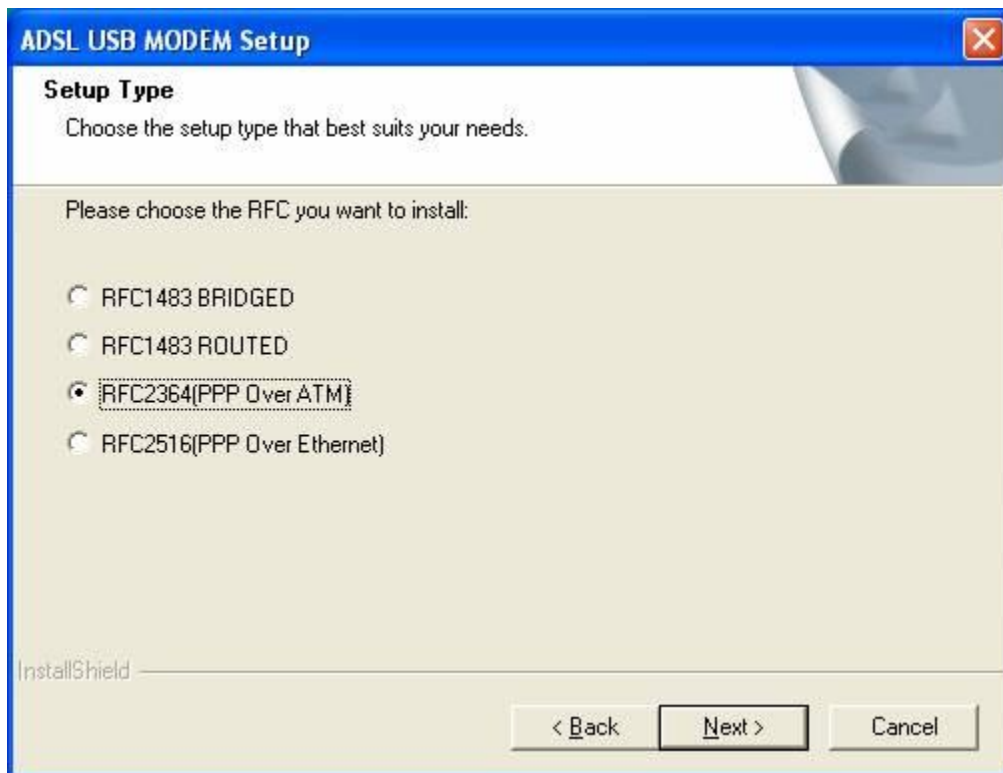


3. Start Run Setup (From ADSL CD).

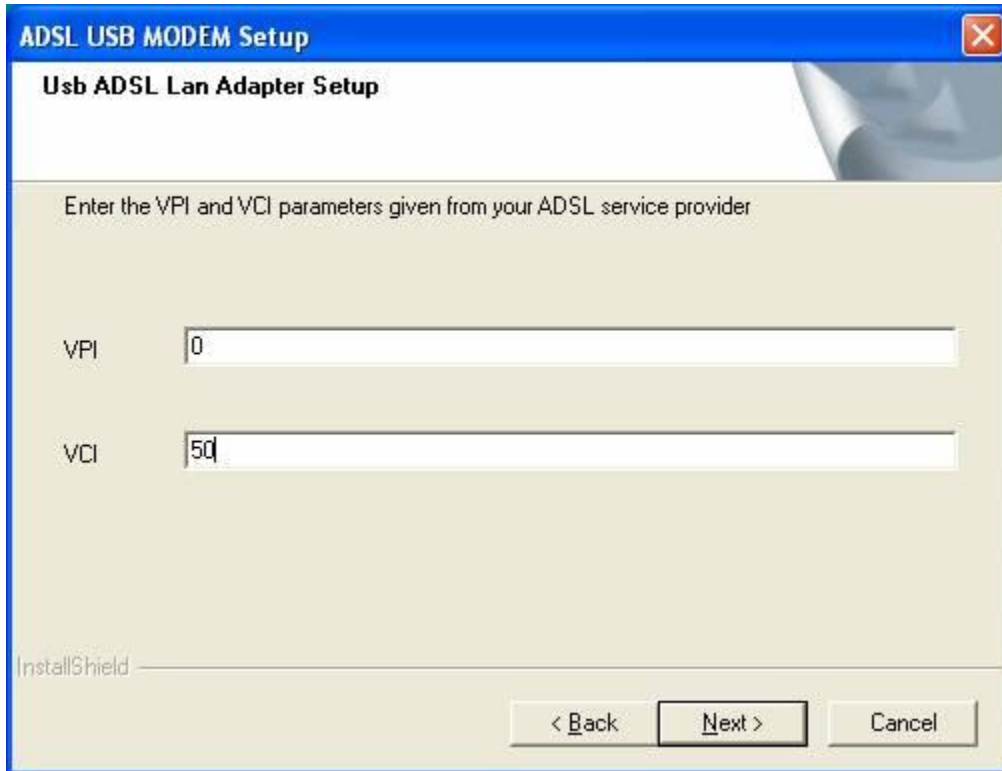
4. Click Next.



5. Select RFC2364 (PPP Over ATM), then click Next.



6. VPI 0, VCI 50, then click Next.



ADSL USB MODEM Setup

Usb ADSL Lan Adapter Setup

Enter the VPI and VCI parameters given from your ADSL service provider

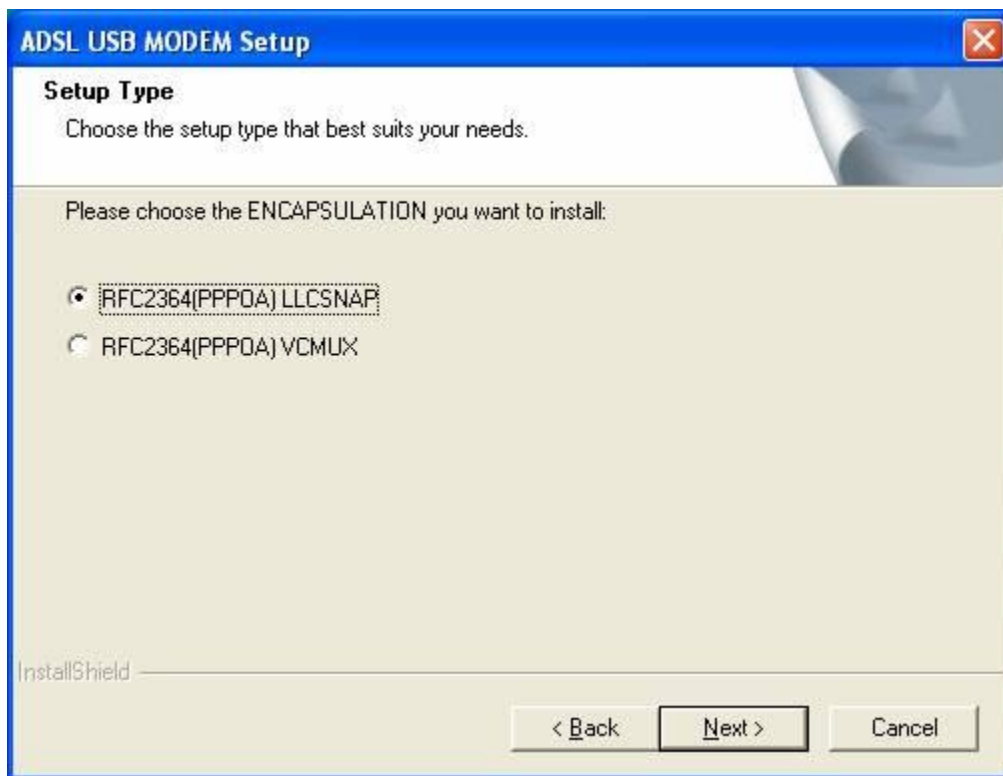
VPI

VCI

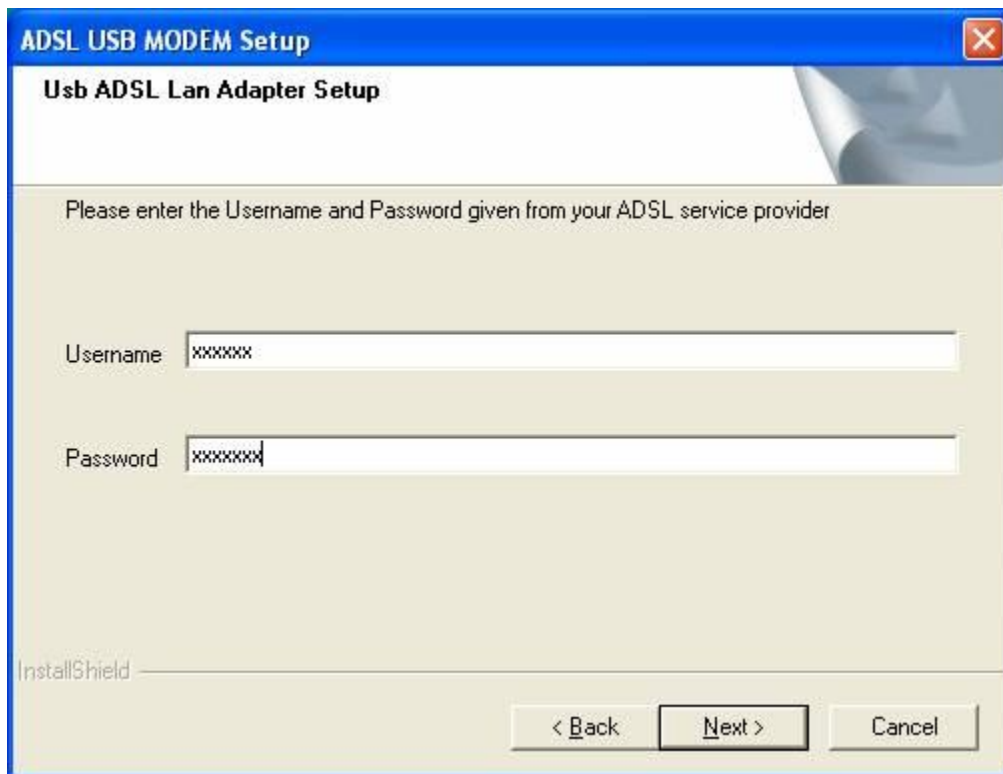
InstallShield

< Back Next > Cancel

7. Select RFC2364(PPPOA)LLCSNAP, and then click Next.



8. Type Username and Password, then click Next.



ADSL USB MODEM Setup

Usb ADSL Lan Adapter Setup

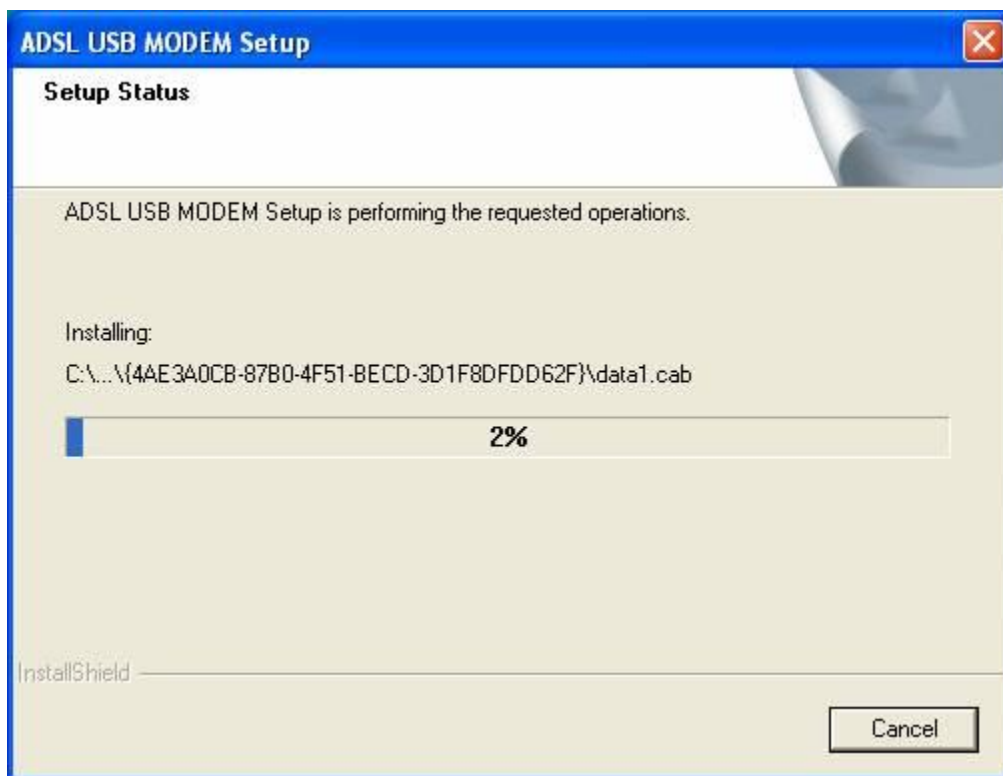
Please enter the Username and Password given from your ADSL service provider

Username: xxxxxx

Password: xxxxxxxx

InstallShield

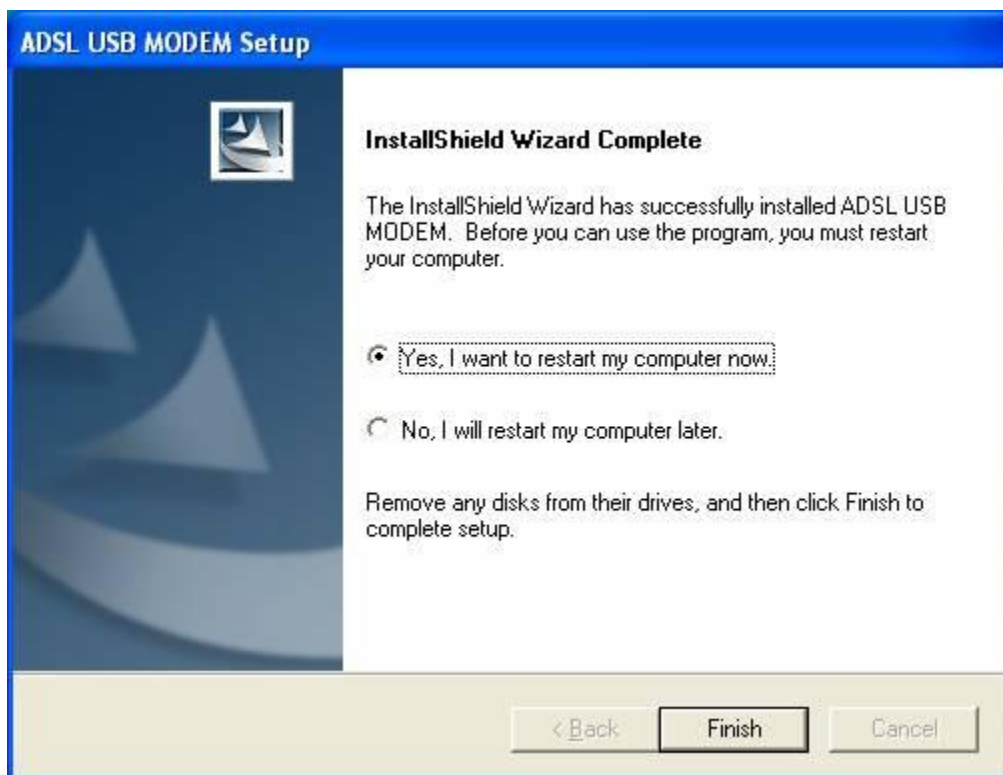
< Back Next > Cancel



9. Click "Continue Anyway".



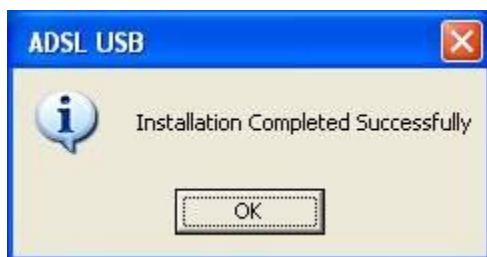
10. Click Finish.



11. Computer will restart and below screen will appear:



12. Connect Modem USB cable to PC.



13. Click Yes.



14. After the restart ADSL dialer short cut will be created in Desktop.

