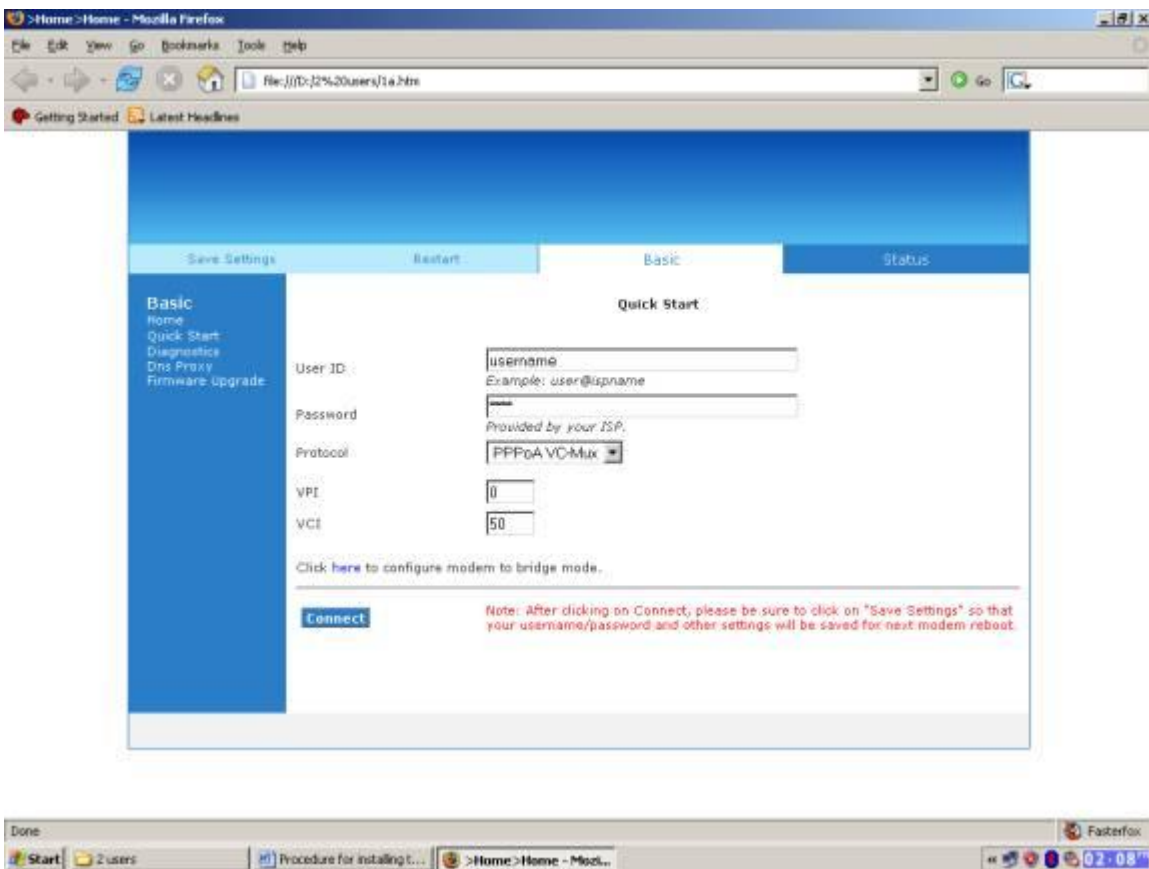


How to configure Internet on Aztech 600EU Single User?

How to configure Internet on Aztech 600EUB?

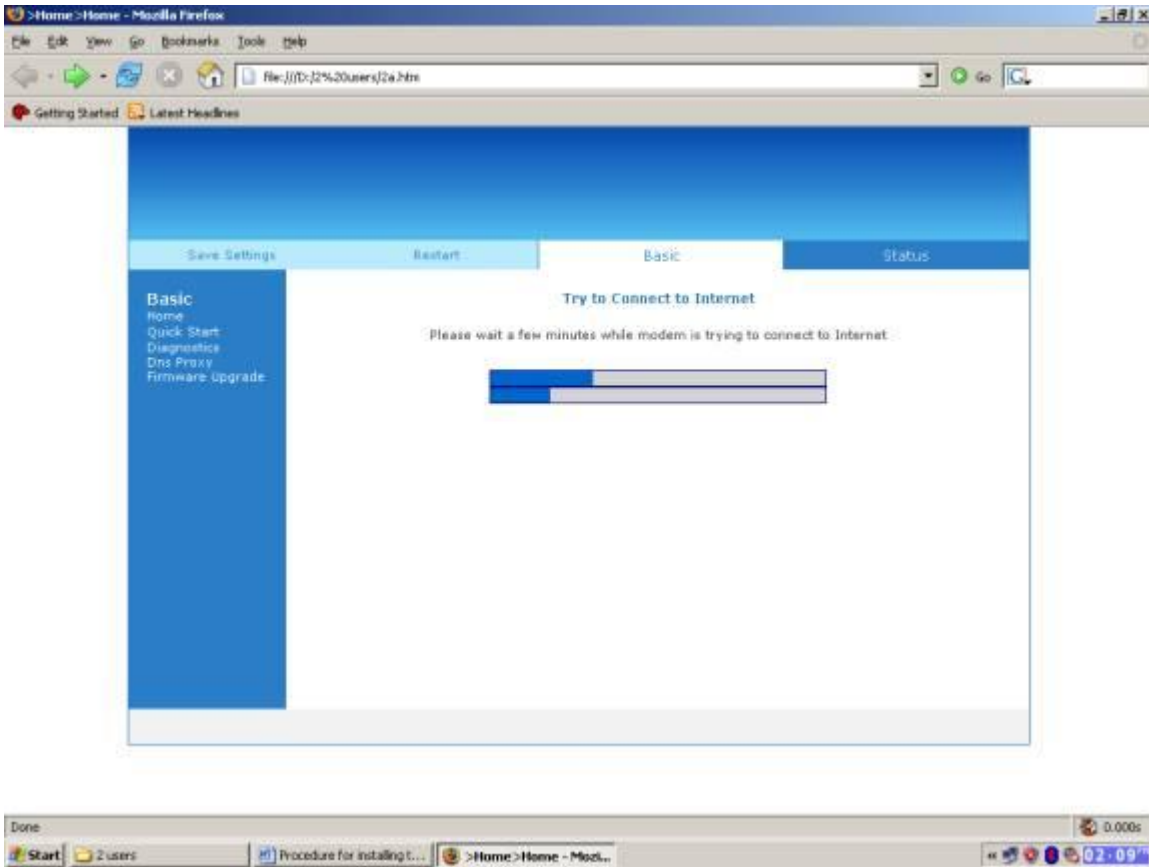
Aztech 600EU/600EUB (Single User)

Open internet explorer and go to <http://192.168.1.188>

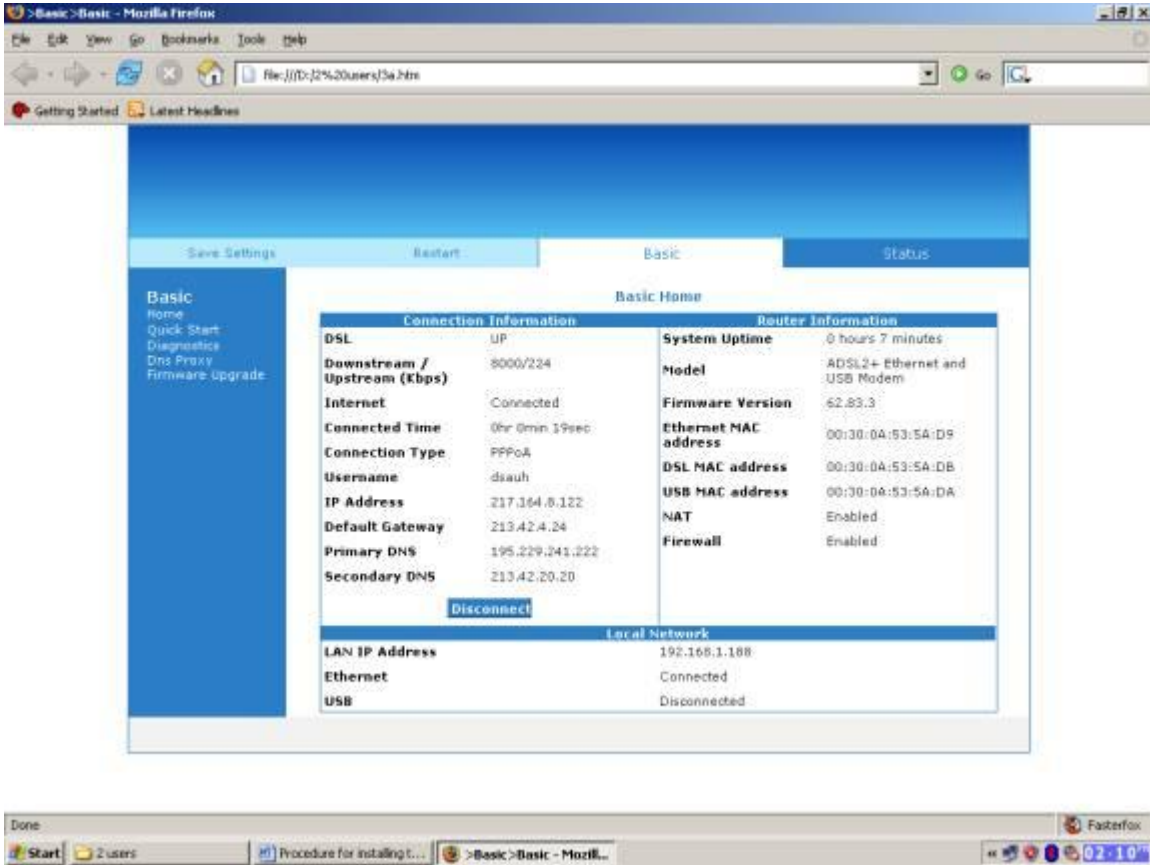


Fill up the following details with proper Username & Password and click Connect..

(Click Quick Start to Access This Menu).



Shows Progress for Connection.



After successful Connection, Basic Menu Screen is seen.

(Shows Connection Details Also Firmware Version).