

How to configure Internet on Cell Pipe 20A?

Lucent CellPipe 20A

Important Notes

- If unable to reinstall lucent modem driver using the normal methods, giving the error message "Unable to Reinstall Lucent Modem Driver" or a similar message, and then quits, it is likely that the InstDll.dll file is missing. To work around this issue, you will need to delete two items by hand in order to re-install successfully. Please use the following steps:
- Delete the wwdslcfg.ini file, located in the C:\Windows directory .
- Delete the folder which is named C7B39B4... which is located in C:\Program Files\InstallShield Installation Information. (Please note that the letter portion of the folder name can vary, and that this folder is hidden) .
- You should be able to successfully install the drivers.

ADSL CELL- 20A- USB modem revisions and drivers

- Please be informed that for Lucent ADSL Cell-20A-USB modem there are three different drivers available on Al Shamil website. The three modems look physically similar.
- The software version to be used depends on the REV type which is available on the back side of the modem (next to Serial number) which is due to the hardware change in the product. Physical look of both the modems is similar.
- Hardware Rev: B. Software driver version: 1.11 (comes with package) or 1.12. In Driver CD written as "Cell Pipe 20A -USB". (generally CST staff carries with them)
- Hardware Rev: C. Rev: D, and Rev: E. Software driver version: 1.04.0014E. In Driver CD written as "CellPipe 20A -USB V.2"
- Hardware Rev: F. In Driver CD written as "CellPipe 20A -USB Driver" (1.02EAPKG007-A-LU-T1-Q2W-0615).
- Note: Drivers should be installed depending on Rev: type only. Installing the drivers vice versa may cause problem in Operating System.

For Windows 98, ME, Windows 2000 Professional and Windows XP Home Edition/Professional

Part I- Installation of PPPoA driver for Lucent 20A-USB modem

Prior to installation, be sure you have:

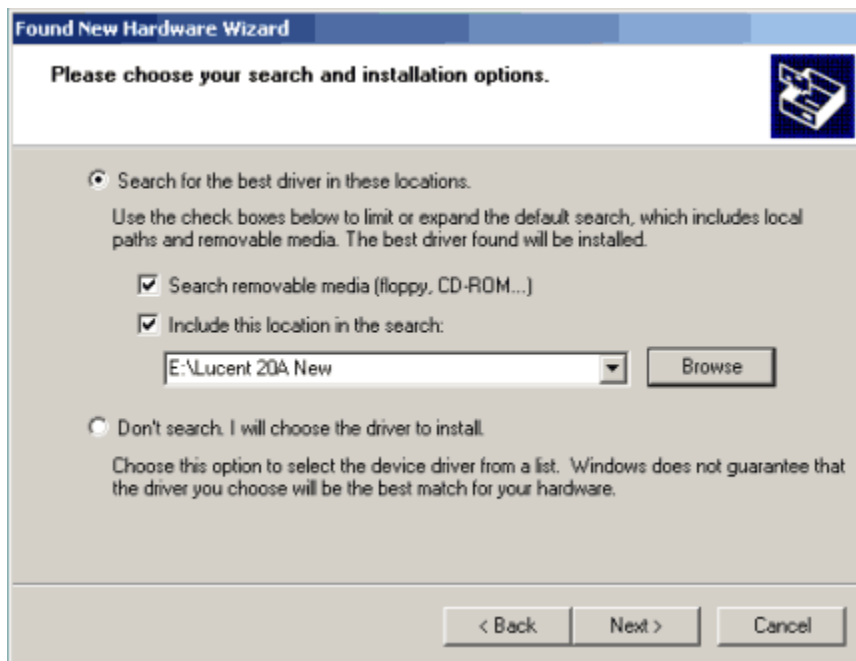
- The CellPipe 20A-USB modem connected to your computer.
- No other Windows programs running on your computer during the software installation process.

1. Your system will detect the CellPipe 20A-USB modem. Wait for the process to complete.
2. The 'Found New Hardware Wizard' window appears to help you with the installation of the device driver. Click Next.

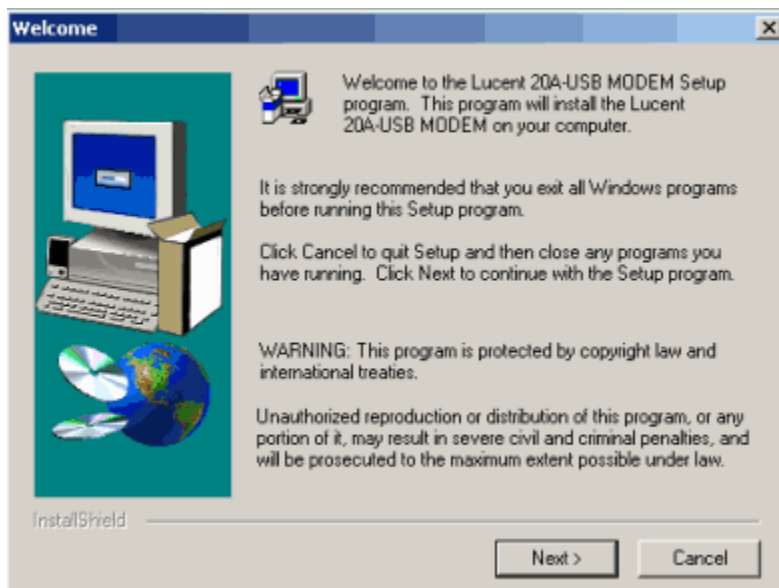


3. In the next 'Found New Hardware Wizard' window you are asked to specify the location for the new driver. Select 'Search removable media' option and provide the CD-ROM drive location.

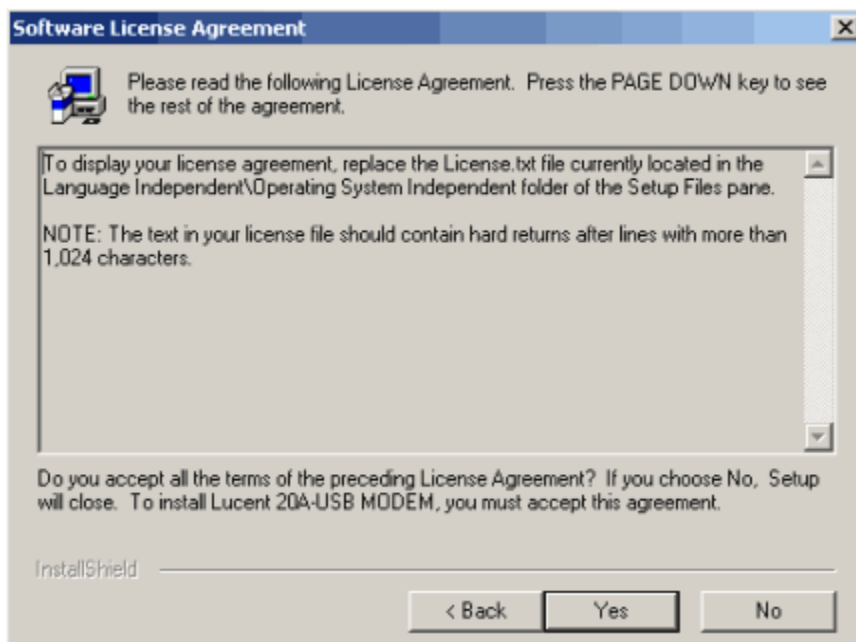
- Click Next.



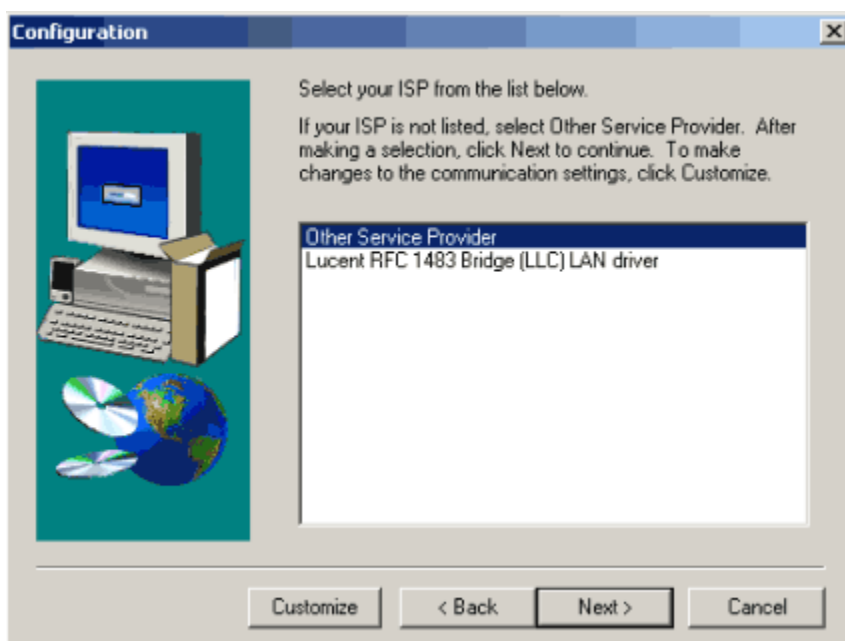
- Upon finding the device driver the 'Lucent CellPipe 20A-USB ADSL Modem 'Installation' window will appear. Click Next on the 'Welcome' window.



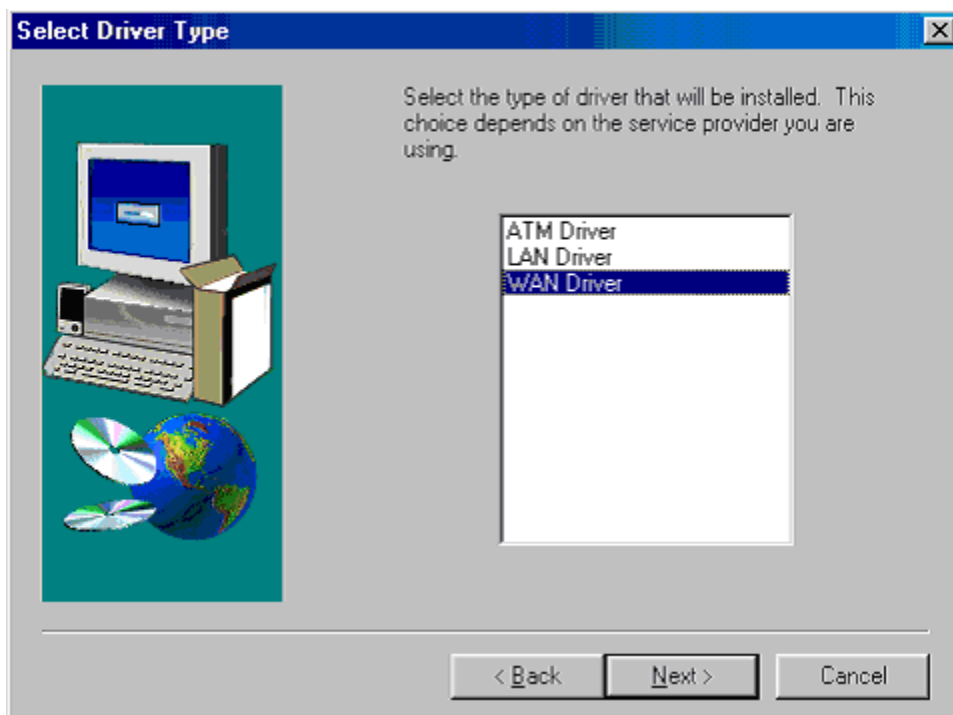
- Click Yes on the 'Software License Agreement' window.



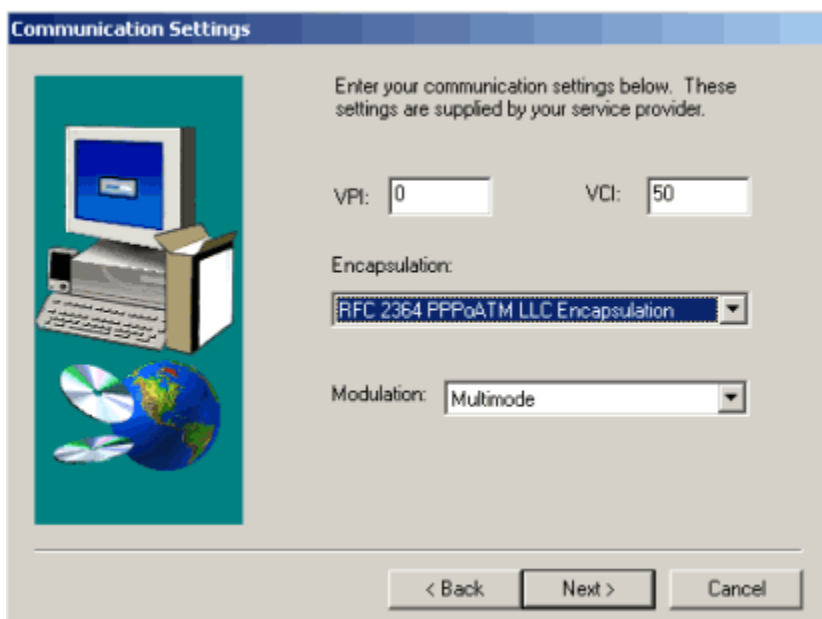
- Select 'Other Service Provider' option and click Next on "Configuration" window.



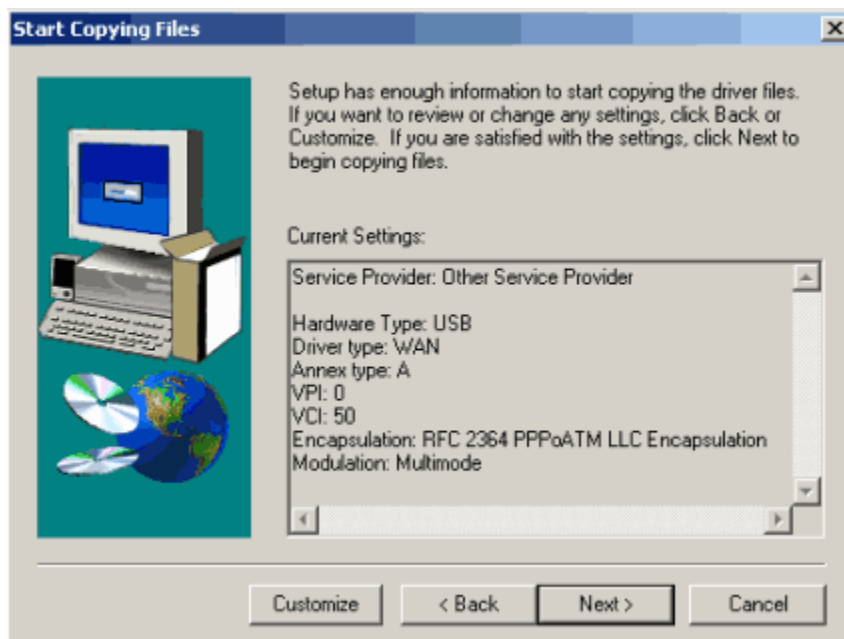
8. Select Wan Driver and click Next on the 'Select Driver Type' window.



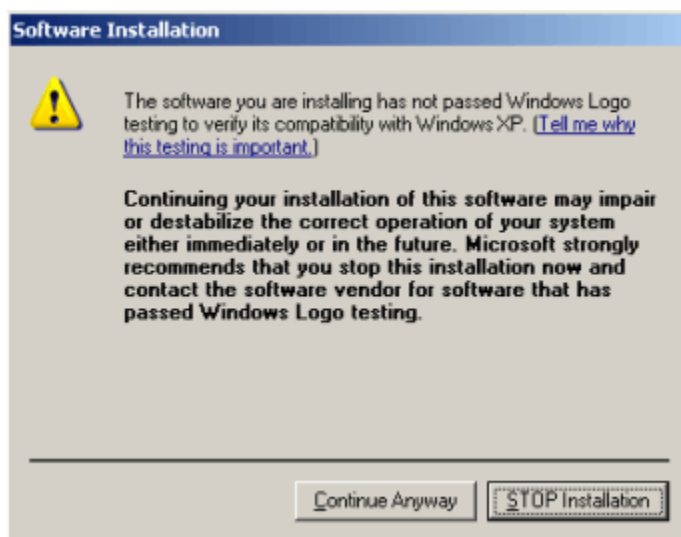
9. The 'Communication Settings' window will appear. Change VPI value to 0 and VCI value to 50. Select Encapsulation as RFC 2364 PPPoATM LLC Encapsulation, and click Next.



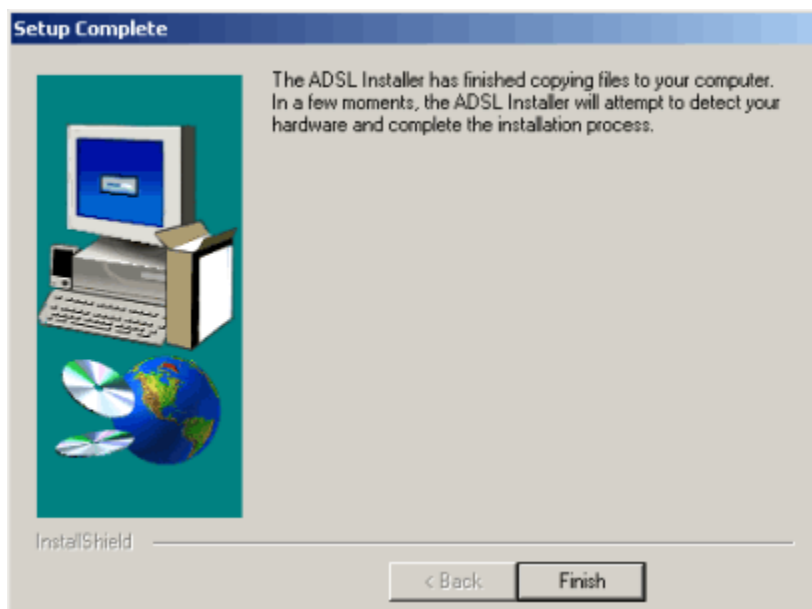
10. The 'Start Copying File' window displays. You may review the current setting and click Back to change the settings. Click Next to accept the current settings.



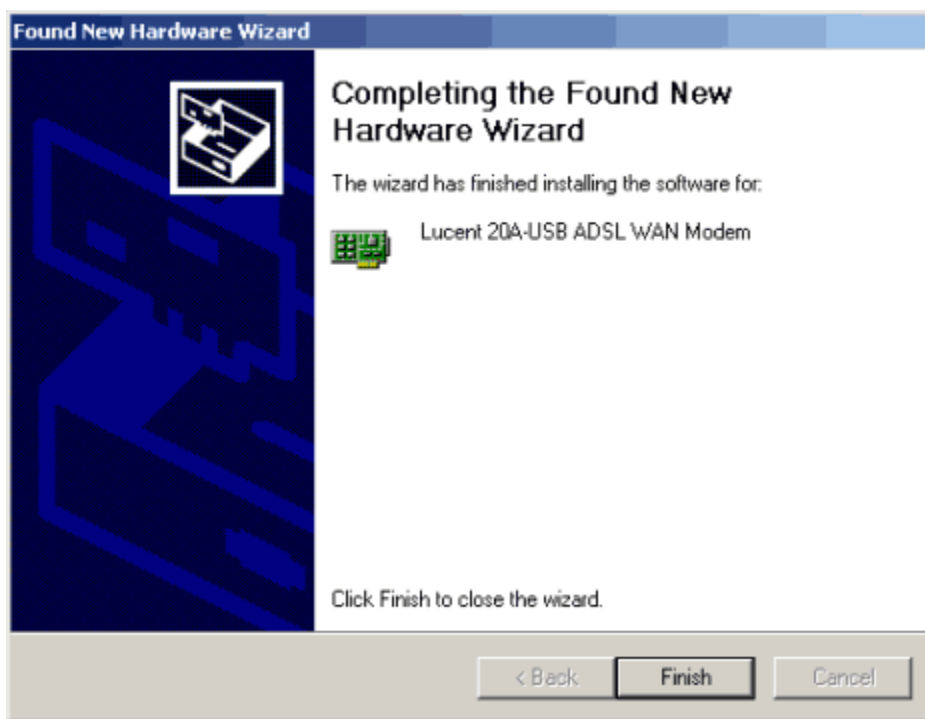
11. A 'Software Installation' window appears with warning. Click Continue Anyway.



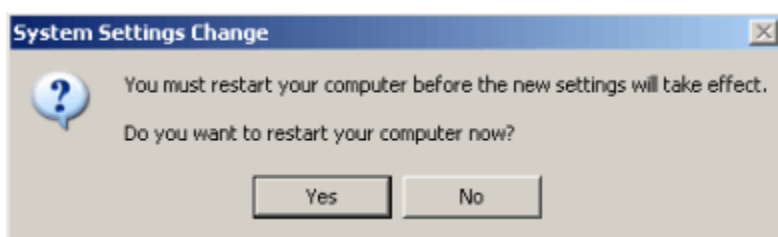
12. The 'Setup Complete' window appears, and click Finish.



13. Once the device driver setup is completed, the 'Found New Hardware Wizard' displays. Click Finish.



14. The 'System Settings Change' window appears. Click Yes to restart the computer.



15. After restart, a dial up connection icon will appear on the Desktop.
 Double click on the Icon and enter your user name and password and click on Dial.



16. After successful authentication you are on line by using PPPOA driver for Lucent 20A Modem.

