

eLife

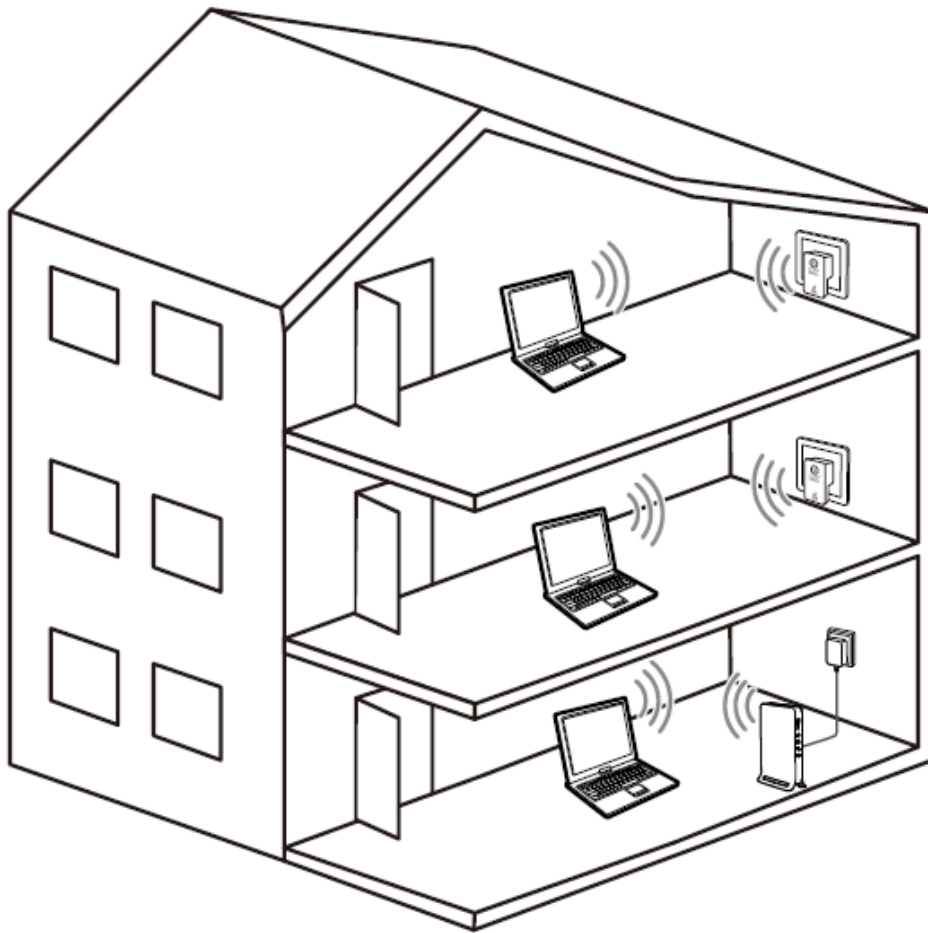
Wi-Fi Repeater

Huawei WS320



etisalat  اتصالات

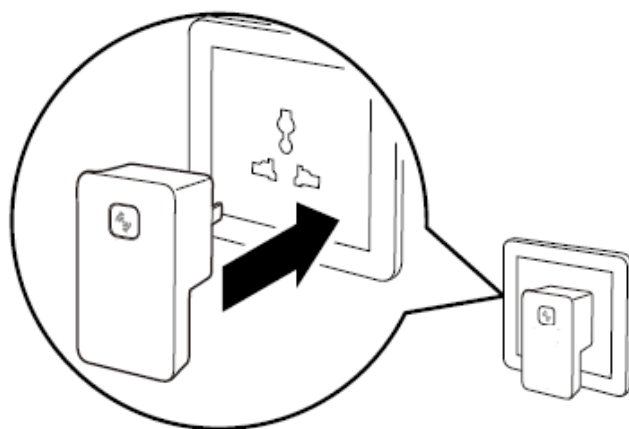
# Home Network



# WS320 Quick Start

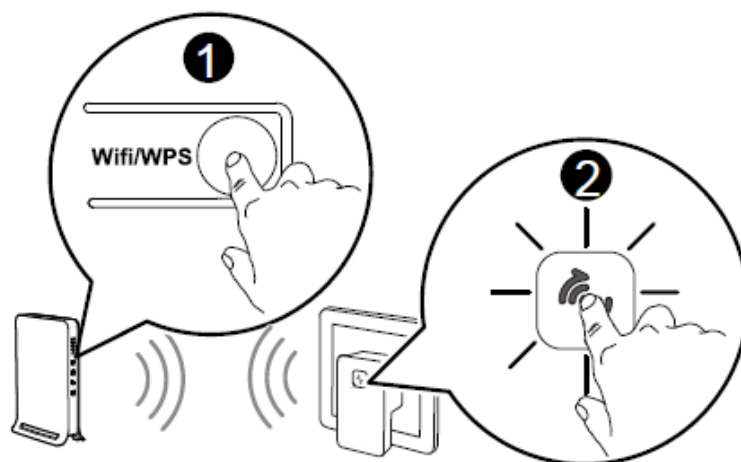
## Automatic Connection through WPS Button

**1**



Connect the WS320 to a power socket and wait for the Amber light.

2



Please press and hold Wifi/WPS button on the router first for 5 seconds and then press the Amber switch on the WS320 (the Amber light will begin to flash).

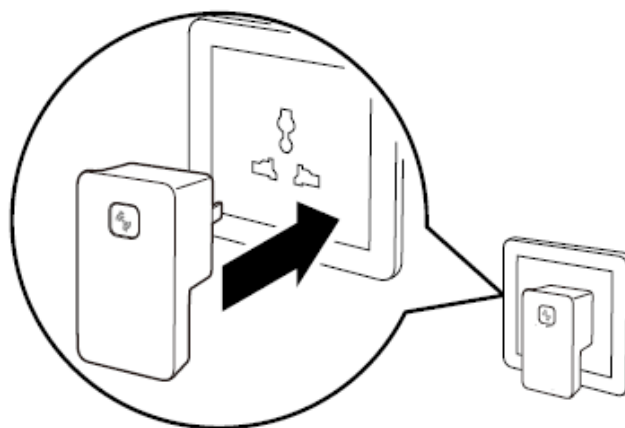
3



Wait until the flashing Amber light changes to solid green (generally about 20s and less than 120s) and you are set up and ready to move the WS320 to its final location.

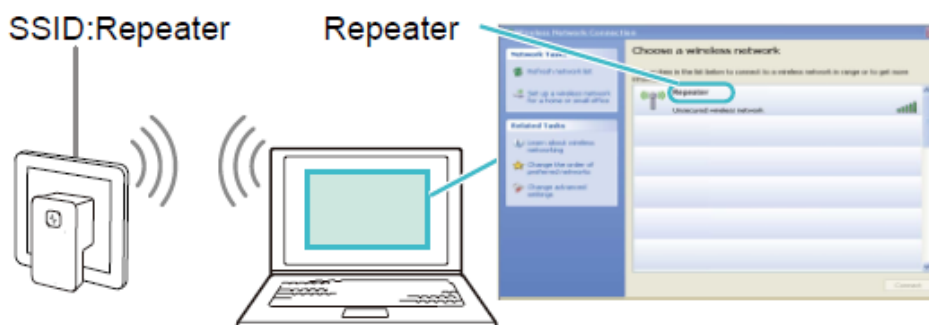
## Manual Connection through the Repeater Web Page

**1**



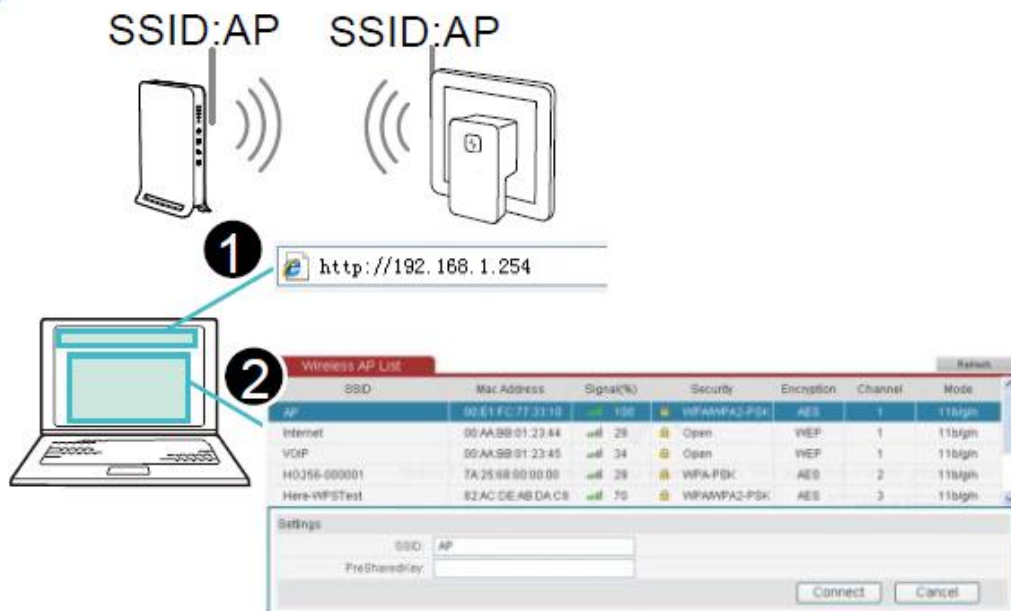
Connect the WS320 to a power socket and wait for Amber light.

**2**



Search for wireless networks on your computer. A wireless network called "Repeater" will appear on the list. Click on it and connect.

3

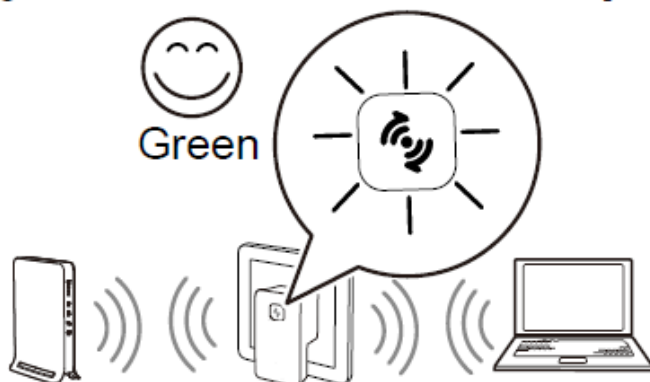


- Step 1 Open an internet browser, type in **http://192.168.1.254** and you will be re-directed to the WS320 set up page.
- Step 2 Select **Manual Connecting**, search through the list and select the name of your wireless network.
- Step 3 Enter your wireless password in the **PreSharedKey** text box and then click **Connect**.

4



Once the light goes Green on the WS320, the device is set up and it is ready for use.



When the indicator turns solid green, it indicates that the WS320 is connected to the wireless router through the wireless network. Refer to the User Guide for more information.