



Configuration Manual

Aztech HW550-3G

4-Port Wireless N Router plus HSPA Support for 3G Mobile Broadband



Table of Contents

1. Manual Configuration - Internet Settings	3
2. Connecting to the Internet.....	3
3. Wireless Configuration for optimum performance	6
4. Router Firmware Upgrade.....	7
5. Setting Administration Password for Router.....	9

1. Manual Configuration - Internet Settings

- 1.1 Connect an Ethernet Cable to your router's WAN port and other end of the cable to Etisalat ONT Port (Internet).
- 1.2 Connect the power cable to the router's power jack and plug it in to the wall socket.



2. Connecting to the Internet

To Connect to the Internet via the Web User Interface:

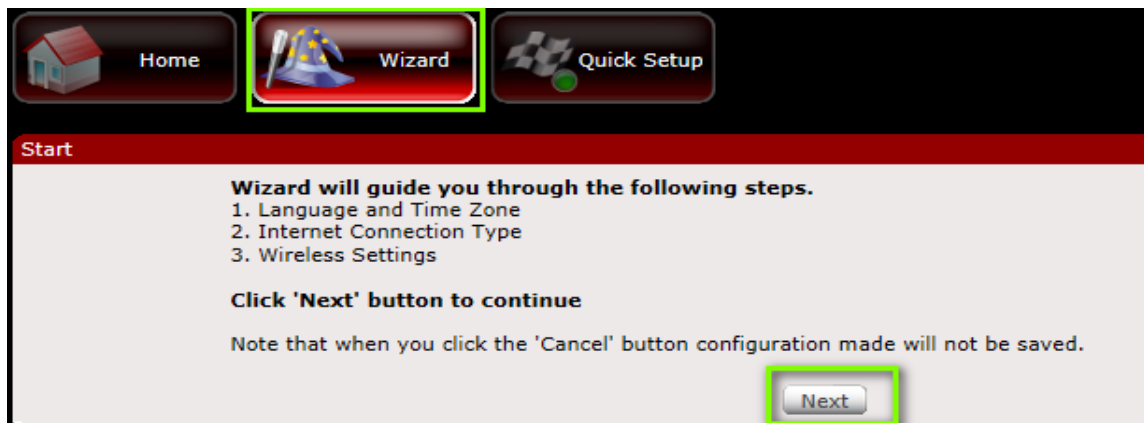
- 2.1 Open your Internet web browser, type <http://192.168.2.1> in the address bar and press enter. This opens the login authentication page



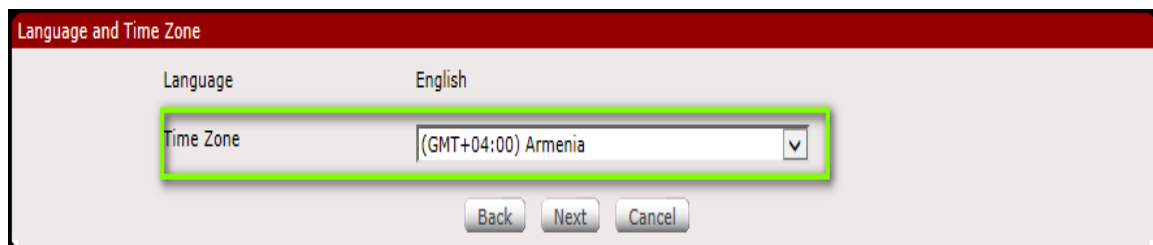
- 2.2 Type your Username and Password. Your default Username and Password is admin/admin.
-



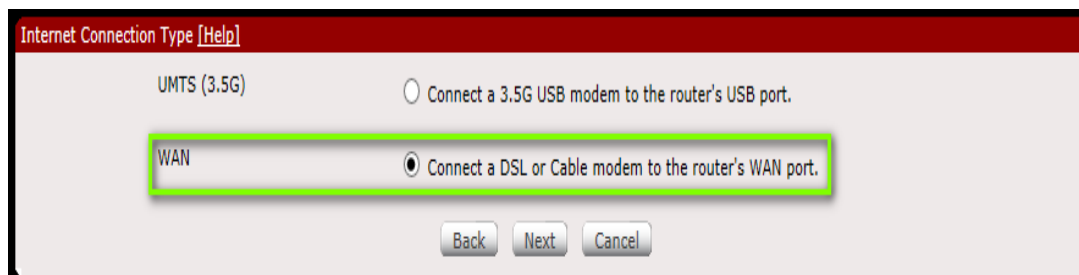
- 2.3 Click the Wizard Tab, then Follow the step-by-step guide on how to setup the router. Click next to continue.



- 2.4 Select the Language and Time zone from the drop down box then click next to continue.



2.5 Select the Internet Connection type as **WAN** and then click **Next** to Continue.



Internet Connection Type [Help]

UMTS (3.5G) Connect a 3.5G USB modem to the router's USB port.

WAN Connect a DSL or Cable modem to the router's WAN port.

Back Next Cancel

2.6 Choose the Connection Method as **PPPoE** and input your e-Life account credentials from your e-Life card as indicated below and click **next**.



WAN [Help]

Connection Method: PPPoE

Username: e-Life Username

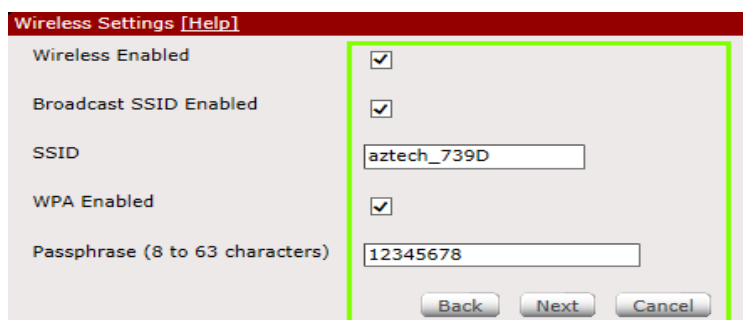
Password: [Masked]

Back Next Cancel

e-Life Card Information:

- Search here for Password: aaaaaaa
- Card Number: [Blank]
- Receipt Number: 12345678
- Username (User ID): XXXXXX
- Help Desk Number: 800 6100
- E-mail address: help@eim.ae

2.7 Click the check boxes to enable **Wireless** and **SSID broadcast**, input SSID & Password of your choice for your Wi-Fi Network.



Wireless Settings [Help]

Wireless Enabled

Broadcast SSID Enabled

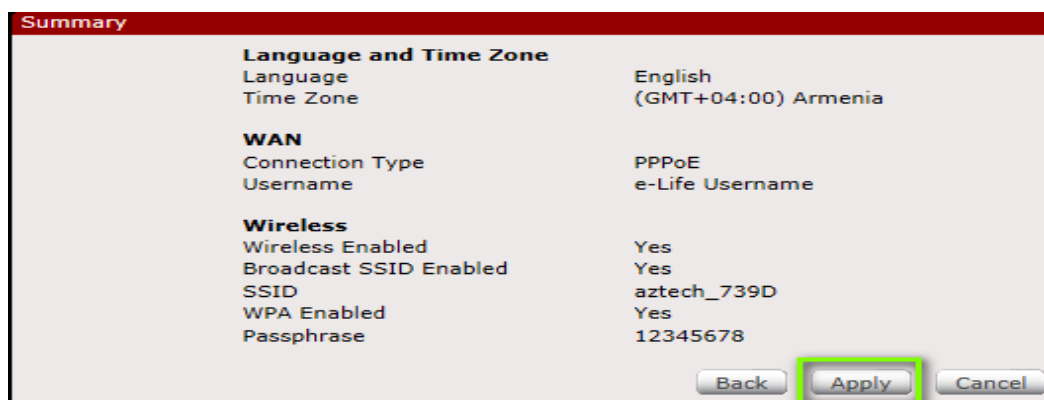
SSID: aztech_739D

WPA Enabled

Passphrase (8 to 63 characters): 12345678

Back Next Cancel

2.8 Click Next and Apply the configuration to your router.



The image shows a 'Summary' configuration screen with the following settings:

Language and Time Zone	
Language	English
Time Zone	(GMT+04:00) Armenia

WAN	
Connection Type	PPPoE
Username	e-Life Username

Wireless	
Wireless Enabled	Yes
Broadcast SSID Enabled	Yes
SSID	aztech_739D
WPA Enabled	Yes
Passphrase	12345678

Buttons: Back, **Apply**, Cancel

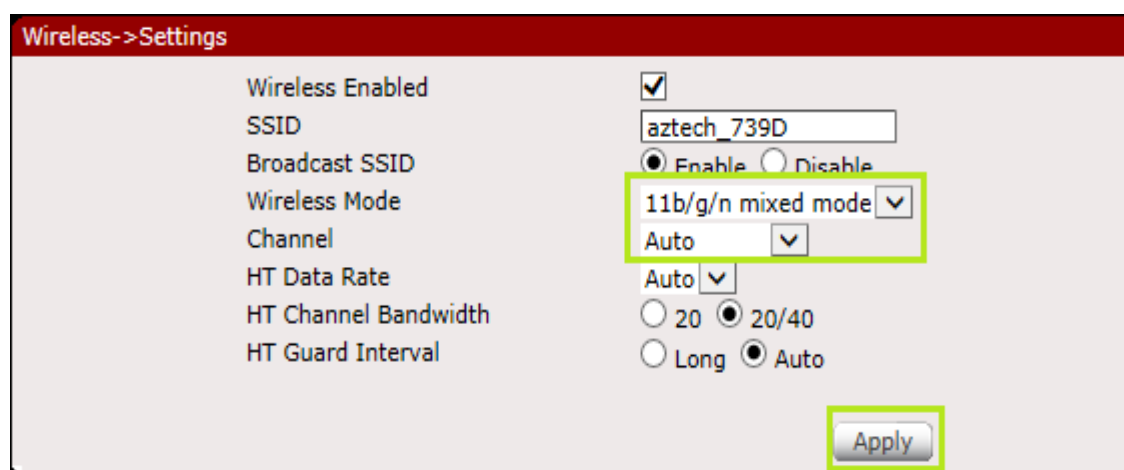
3. Wireless Configuration for optimum performance

3.1 Click on Advanced Mode and proceed to Wireless tab:

3.2 Set the following below under Wireless -> Settings:

i. Wireless Mode : 11b/g/n mixed mode

ii. Channel: Auto



The image shows the 'Wireless->Settings' configuration screen with the following settings:

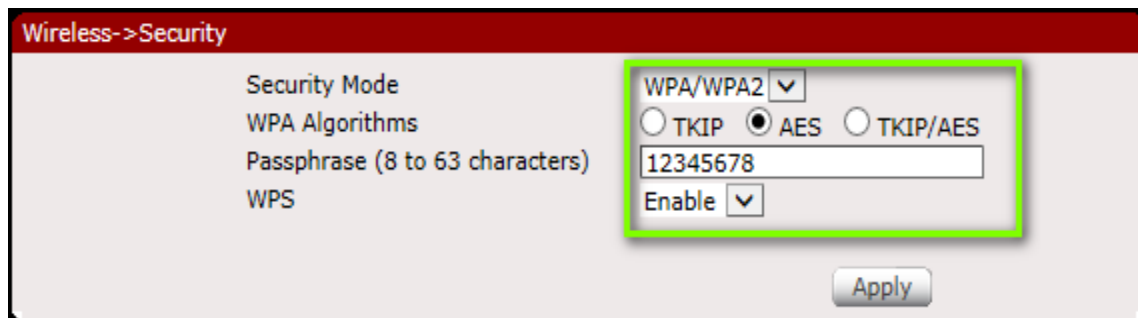
Wireless Enabled	<input checked="" type="checkbox"/>
SSID	aztech_739D
Broadcast SSID	<input checked="" type="radio"/> Enable <input type="radio"/> Disable
Wireless Mode	11b/g/n mixed mode
Channel	Auto
HT Data Rate	Auto
HT Channel Bandwidth	<input type="radio"/> 20 <input checked="" type="radio"/> 20/40
HT Guard Interval	<input type="radio"/> Long <input checked="" type="radio"/> Auto

Buttons: **Apply**

3.3 Set the following below under Wireless -> Security:

- a. Security Mode as WPA / WPA2
- b. WPA Algorithms as AES
- c. Set password of your choice
- d. WPS : Enable

3.4 Click Apply to save the security changes to the router.



NOTE: 1

[Assign a complex password of your choice for your Wi-Fi Network to prevent unauthorized internet access](#)

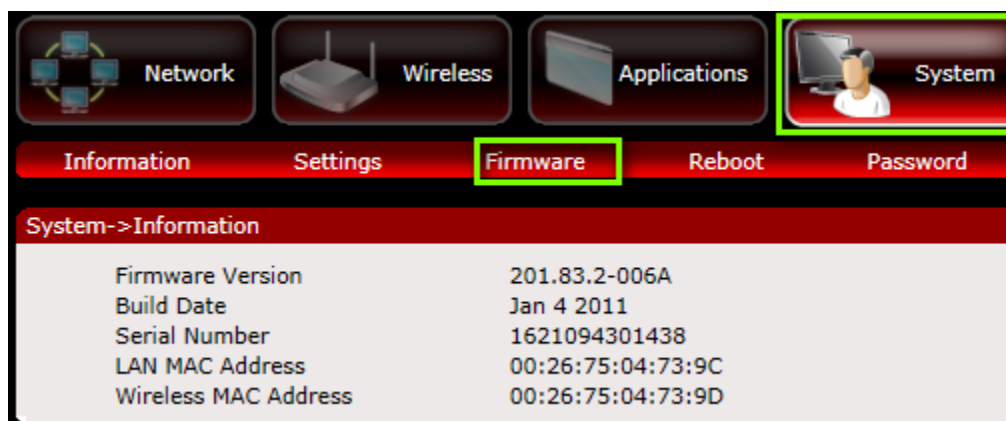
4. Router Firmware Upgrade

NOTE: 2

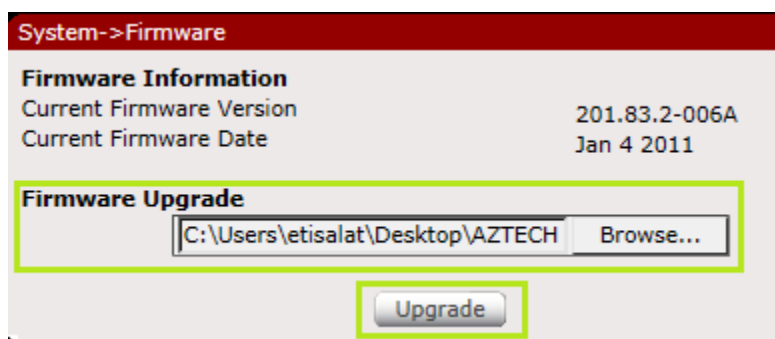
[Always use an Ethernet Cable Connection to your Router while performing Firmware Upgrade.](#)

- 4.1 Download the new firmware for your Aztech HW550-3G Router to your connected computer.
-

- 4.2 Click on **Advanced Mode** and proceed to **System**. Click on **firmware** to open the firmware upgrade menu.



- 4.3 Browse to the firmware location on your computer by clicking the **Browse** button on the router GUI, click **Upgrade** button to load the new firmware to your router.



NOTE: 3

Do not power off or disconnect your router while Firmware Upgrade is in progress

- 4.4 Wait for the Firmware upgrade process to complete and Router web Page to return. Verify the new firmware as [201.83.3-005](#) by clicking **Advanced Mode** >> **System**.

System->Information	
Firmware Version	201.83.3-005
Build Date	Nov 6 2012
Serial Number	1621094301438
LAN MAC Address	00:26:75:04:73:9C
Wireless MAC Address	00:26:75:04:73:9D

goahead
WEBSERVER™

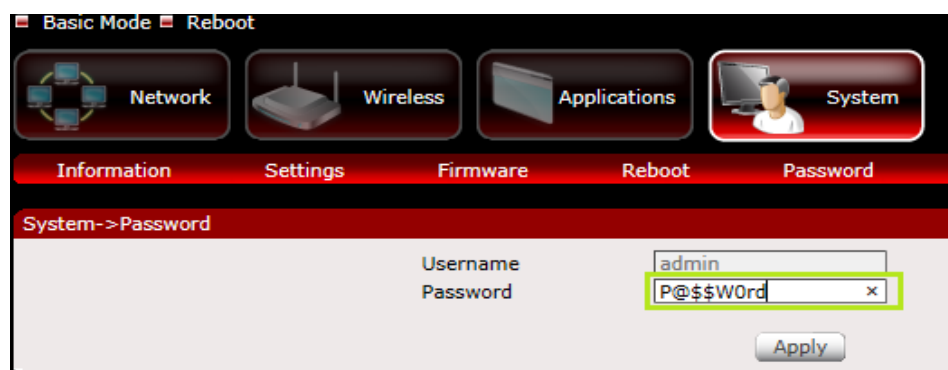
5. Setting Administration Password for Router

The router's administrator password is used to prevent unauthorized persons from accessing the web-based setup of your router and changing any of its settings.

NOTE: 4

It is a must to change the administrator password to avoid unwanted access and to protect your router with a confidential password.

- 5.1 Go to **Advanced Mode**, Select **System** >> Password to input a password of your choice.



Basic Mode Reboot

Network Wireless Applications System

Information Settings Firmware Reboot Password

System->Password

Username: admin

Password: P@\$WOrd x

Apply

NOTE: 5

Wireless network password that is used to connect devices to the network is different from the router administration password.